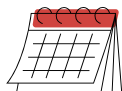


# Working Group

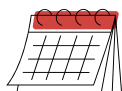
## Spring 2025 Schedule



### **February 27**

**TBD**

Tia Dickerson, Columbia University

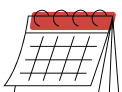


### **April 3**

**Preliminary findings from the Future of Families Generation 3 study**

Julien Teitler, Columbia University

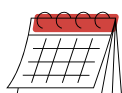
Nancy Reichman, Rutgers Robert Wood Johnson Medical School



### **April 17**

**How Accurately Can Machine Learning Models Predict a Person's Future?  
A Computational Exploration of Hundreds of Life Outcomes**

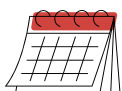
Emily M. Cantrell, Princeton University



### **April 24**

**Updates on the Future of Families Cardiovascular Health Study**

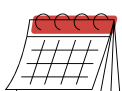
Daniel Notterman, Princeton University



### **May 1**

**Sports team participation and depression among adolescents**

Malya Hirshkowitz, Rutgers University



### **May 8**

**Advancing the Longitudinal Measurement of Aggressive Behavior:  
Applications of Moderated Nonlinear Factor Analysis**

Rebecca Fix and Radhika Raghunathan, Johns Hopkins University

Amanda Geller, University of California at Irvine

Seminars are open to graduate students, faculty, and staff.

Please contact [ffdata@princeton.edu](mailto:ffdata@princeton.edu) if you are interested in attending (in-person or virtual) and have not received an email invitation.

All seminars are on Thursdays and run from 12:00 pm EST to 1:00 pm EST  
Room 275 in Wallace Hall at Princeton, Room 1109 in CSSW at Columbia, & Zoom